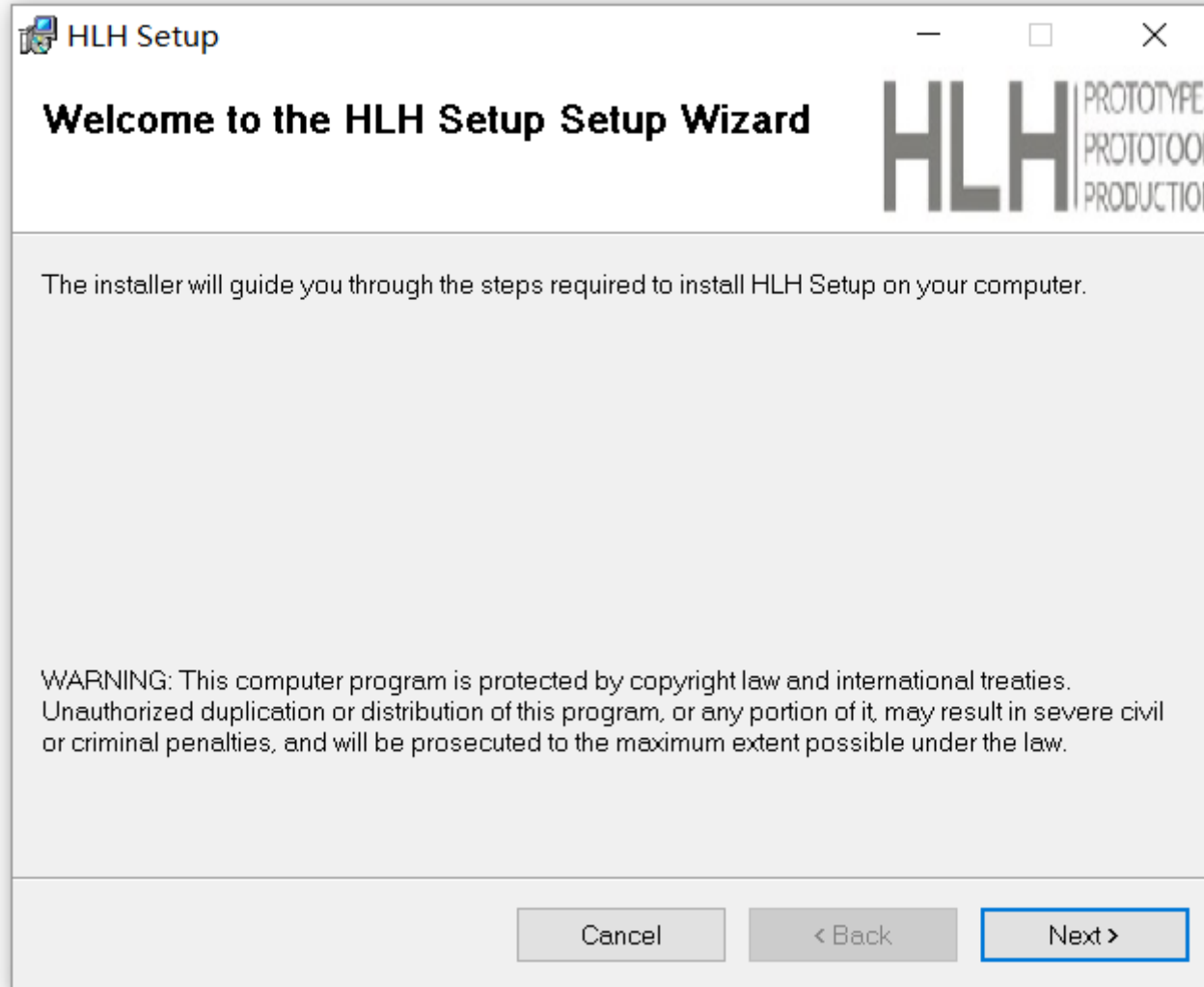


Download and save to preferred location
Double click to run

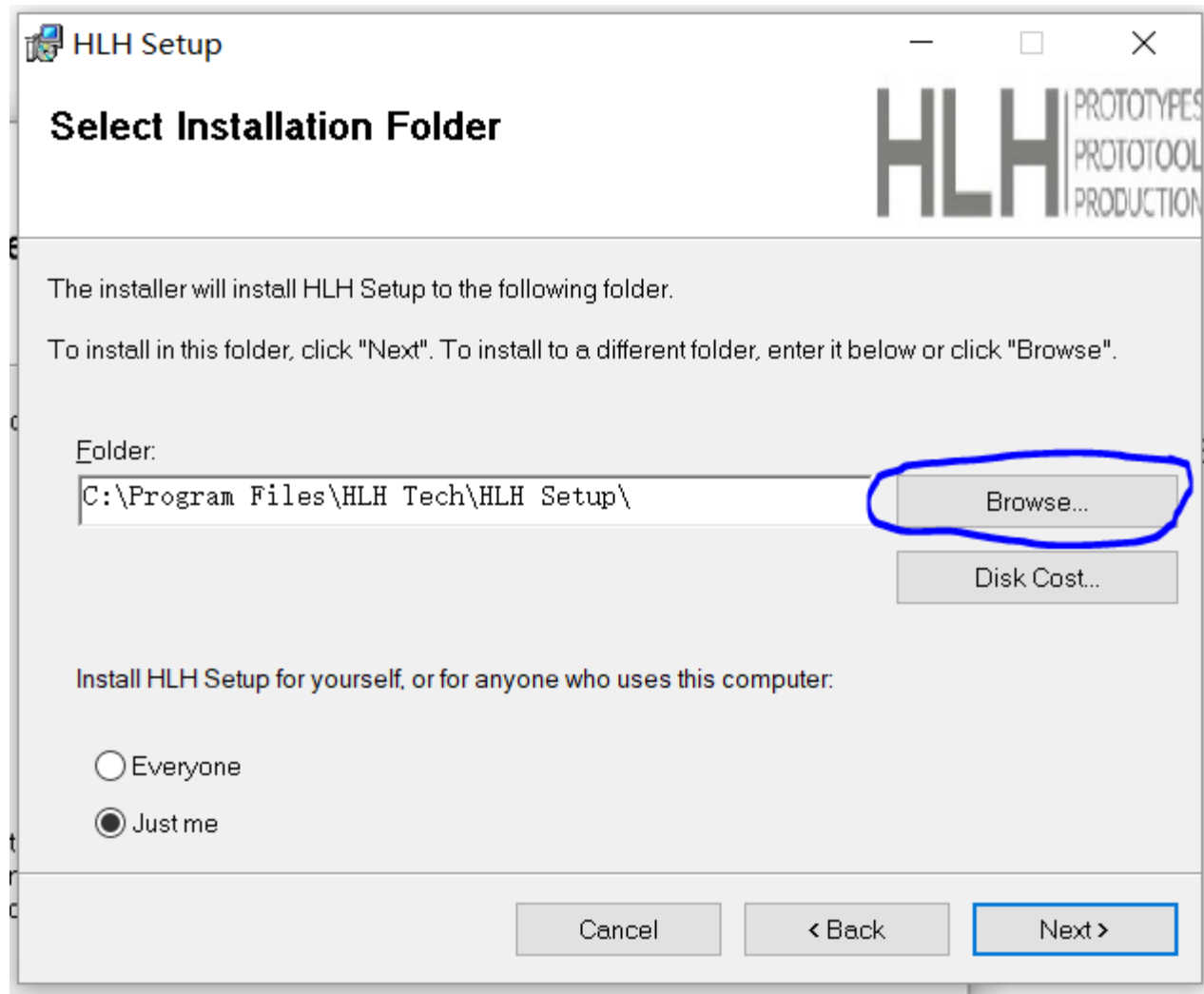


HLH Setup



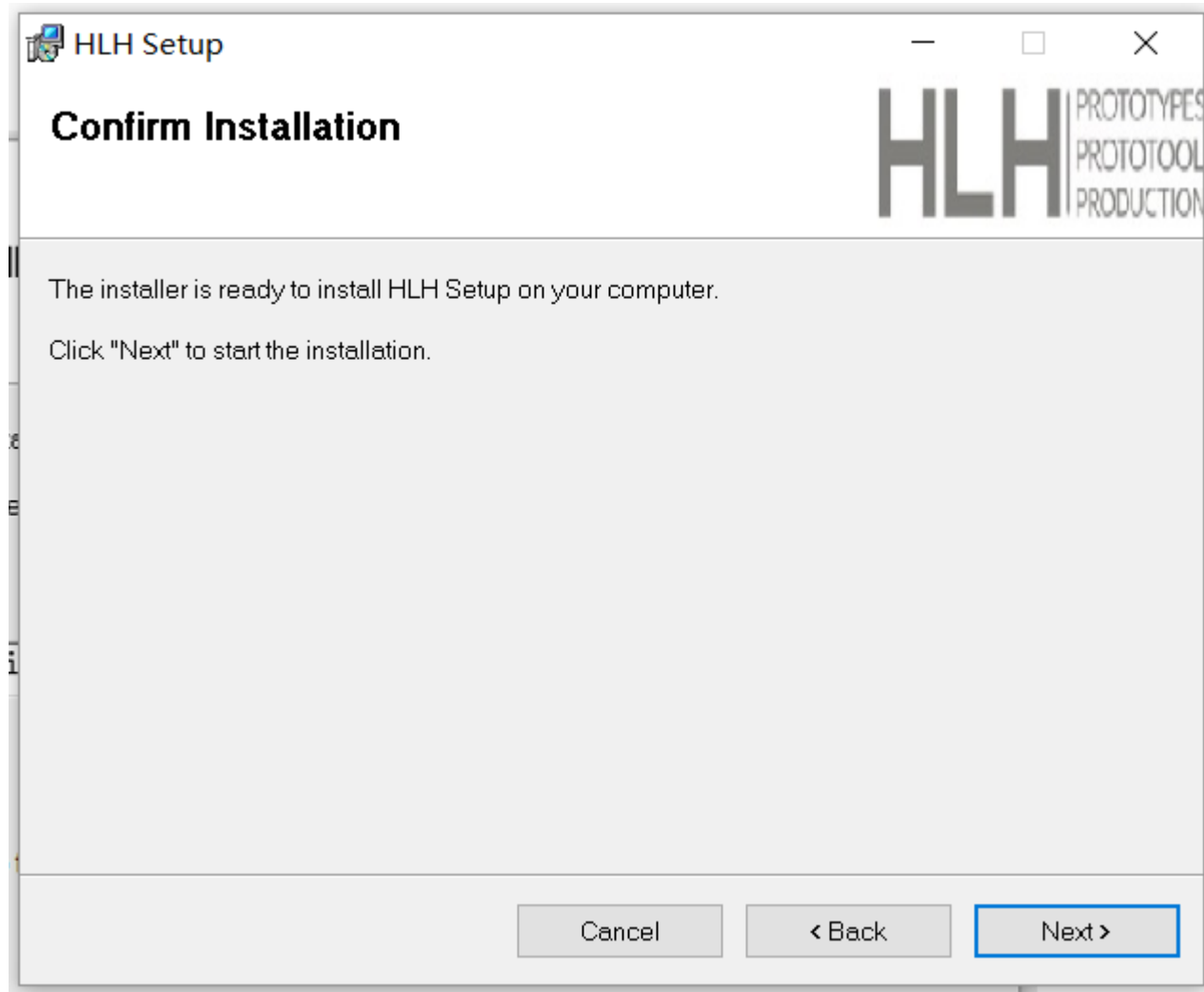
The set-up wizard will take you through Installation

Just click "next"

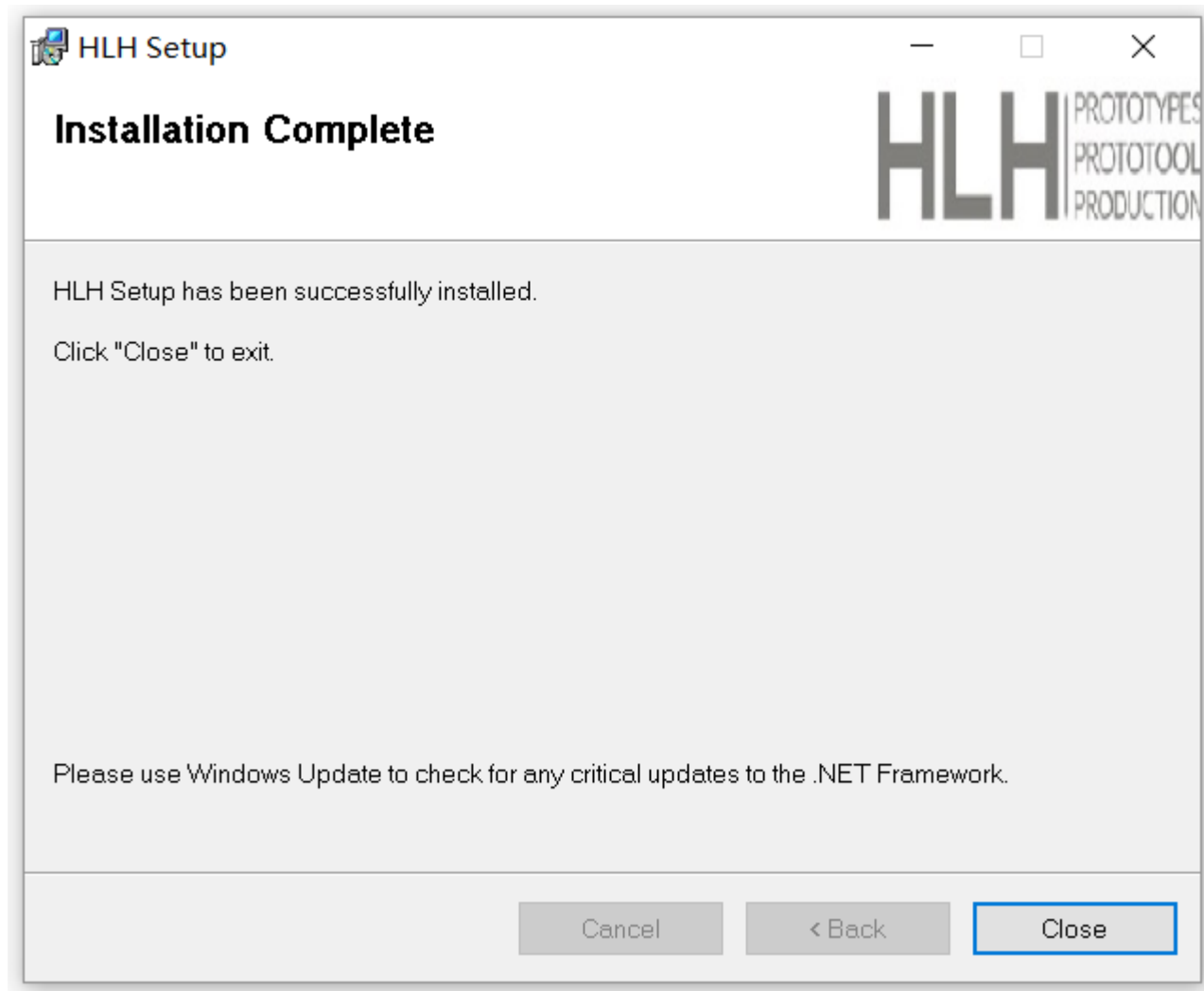


Chose the destination folder

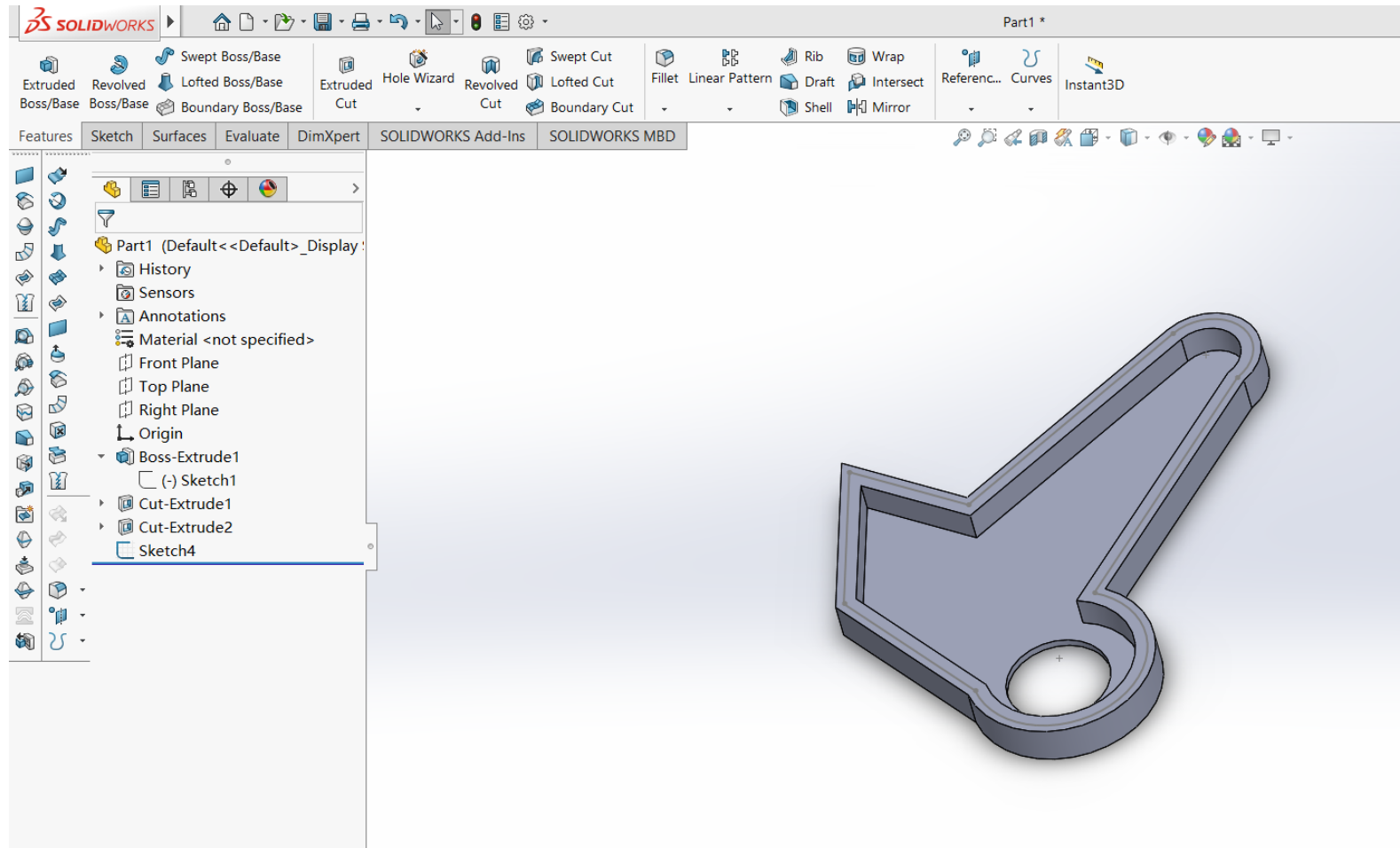
- Use the default or choose "browse" to choose your own
- Click "next"



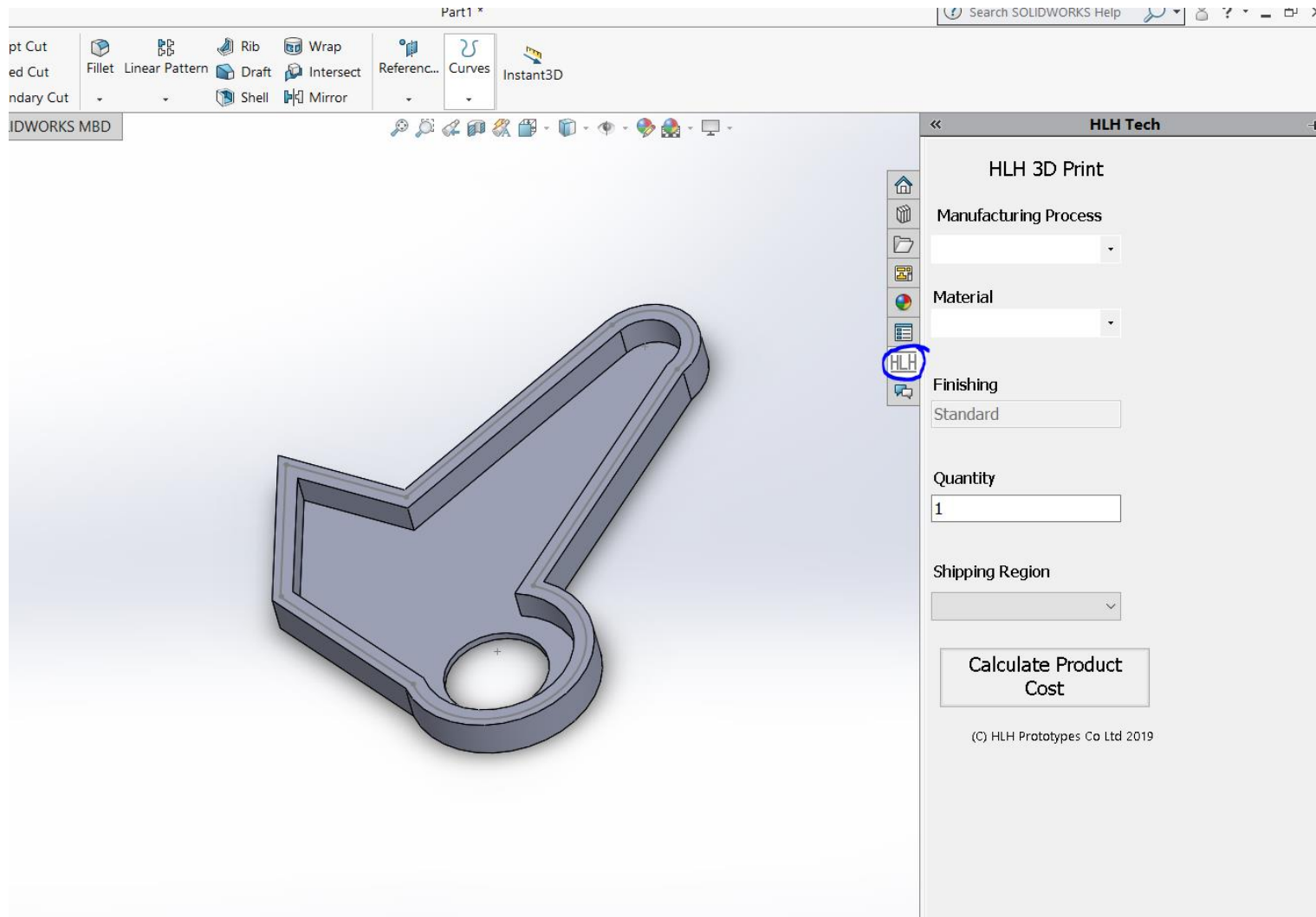
Click “next” to confirm the installation



Installation complete – you are ready to go



Open your part in Solidworks



Click on the HLH icon

The screenshot shows a software window titled "HLH Tech". Inside, the main heading is "HLH 3D Print". Below this, there are several input fields and a button. On the left side of the window, there is a vertical toolbar with icons for home, manufacturing process, SLA, material, finishing, quantity, and shipping region. The main area contains the following elements:

- Manufacturing Process:** A dropdown menu with "SLA" selected.
- Material:** A dropdown menu with "ABS Like" selected.
- Finishing:** A text field with "Standard" entered.
- Quantity:** A text field with "1" entered.
- Shipping Region:** A dropdown menu with "North America" selected.
- Calculate Product Cost:** A button located at the bottom of the form, which is circled in blue.

At the bottom of the window, there is a small copyright notice: "(C) HLH Prototypes Co Ltd 2019".

Select
"Manufacturing Process"
"Material"
"Quantity"
"Shipping Location"

Then press

"Calculate Product Cost"

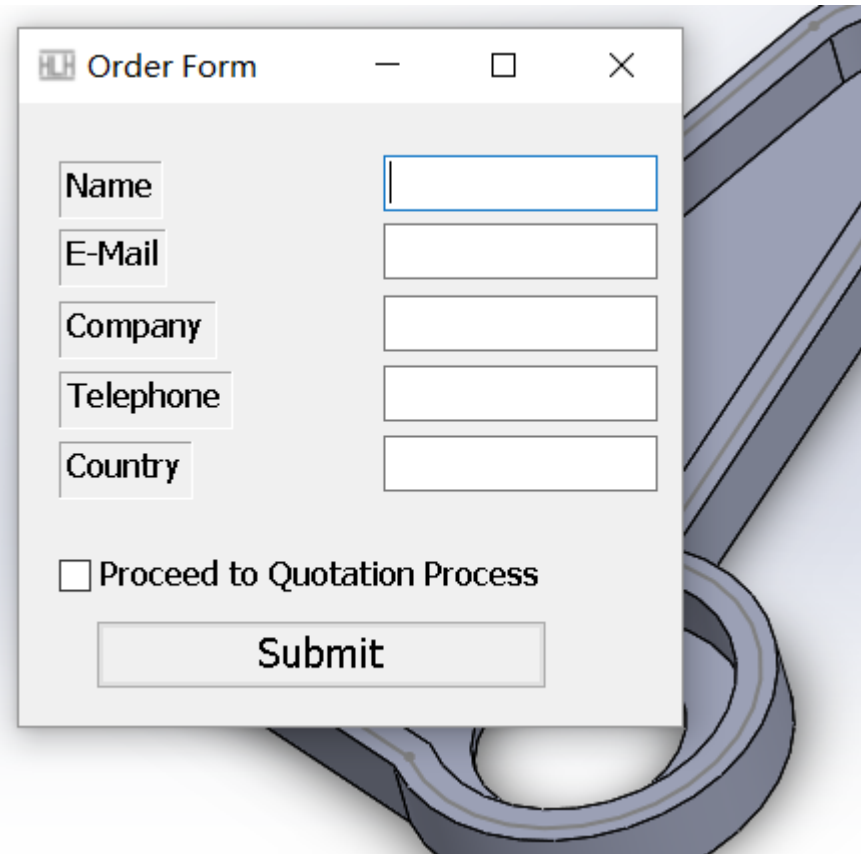
xyz bounding box (mm)	114.69 , 10 , 128.15
Volume (mm3)	28742.19
Weight (g)	33.34
Unit Part Cost (\$)	8.34
Shipping Cost (\$)	15.13
Total Cost (\$)	23.47

Place Order

The system automatically calculates the costs based on your parameters

If you are ready click “Place Order”

An email with your requirements will be sent to our projects team and your order will be processed. You will be contacted by a member of our team to confirm everything



The image shows a software window titled "Order Form" with standard window controls (minimize, maximize, close). Inside the window, there are five text input fields arranged vertically, each preceded by a label: "Name", "E-Mail", "Company", "Telephone", and "Country". Below these fields is a checkbox labeled "Proceed to Quotation Process". At the bottom of the window is a large button labeled "Submit". The window is overlaid on a background image of a blue mechanical part.

Name	<input type="text"/>
E-Mail	<input type="text"/>
Company	<input type="text"/>
Telephone	<input type="text"/>
Country	<input type="text"/>

☐ Proceed to Quotation Process

Submit

Fill in your details and click "Submit"